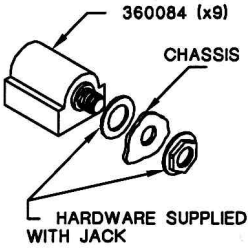
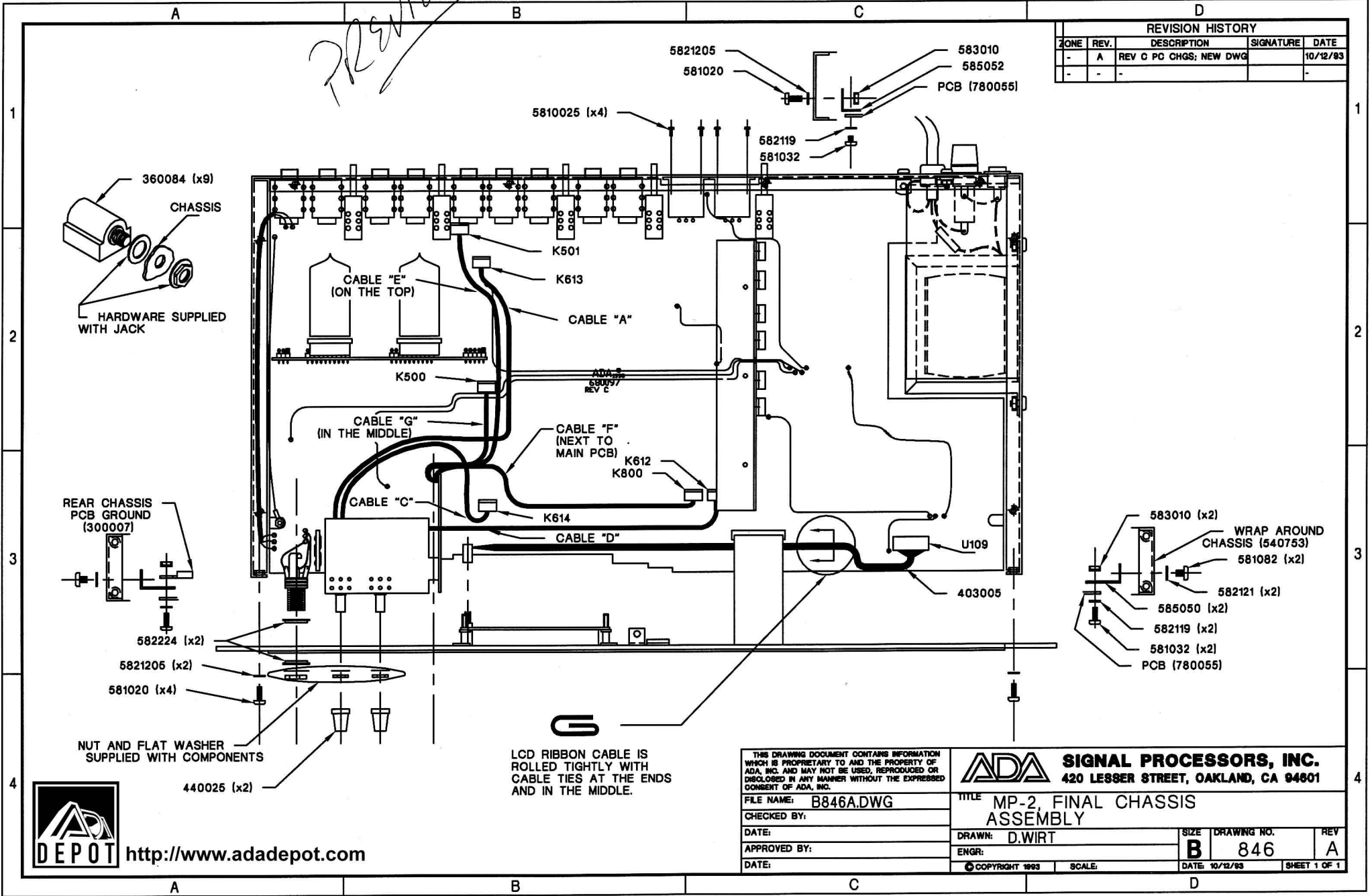
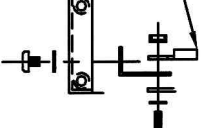


*REVISION*

REVISION HISTORY				
ZONE	REV.	DESCRIPTION	SIGNATURE	DATE
-	A	REV C PC CHGS; NEW DWG		10/12/93
-	-	-		-



REAR CHASSIS PCB GROUND (300007)



582224 (x2)

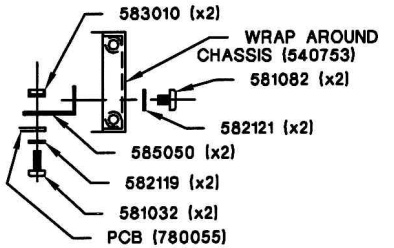
5821205 (x2)

581020 (x4)

NUT AND FLAT WASHER SUPPLIED WITH COMPONENTS

440026 (x2)

LOD RIBBON CABLE IS ROLLED TIGHTLY WITH CABLE TIES AT THE ENDS AND IN THE MIDDLE.



<http://www.adadepot.com>

THIS DRAWING DOCUMENT CONTAINS INFORMATION WHICH IS PROPRIETARY TO AND THE PROPERTY OF ADA, INC. AND MAY NOT BE USED, REPRODUCED OR DISCLOSED IN ANY MANNER WITHOUT THE EXPRESSED CONSENT OF ADA, INC.

FILE NAME: B846A.DWG  
 CHECKED BY:  
 DATE:  
 APPROVED BY:  
 ENGR:  
 DATE:

**ADA SIGNAL PROCESSORS, INC.**  
 420 LESSER STREET, OAKLAND, CA 94601

TITLE MP-2, FINAL CHASSIS ASSEMBLY

DRAWN: D.WIRT	SIZE B	DRAWING NO. 846	REV A
DATE:	COPYRIGHT 1993	SCALE:	DATE 10/12/93